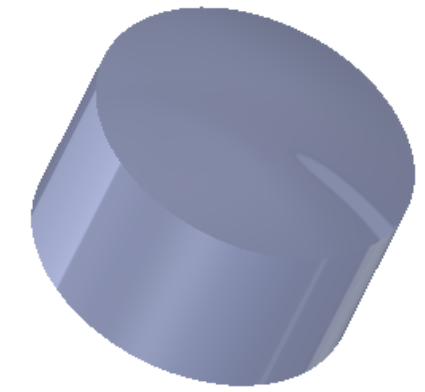
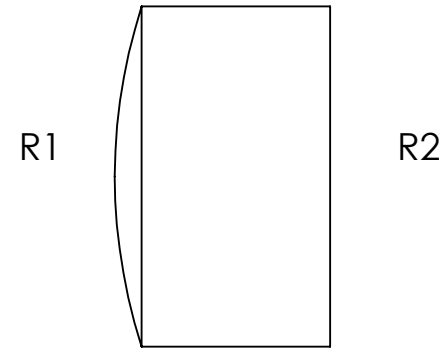
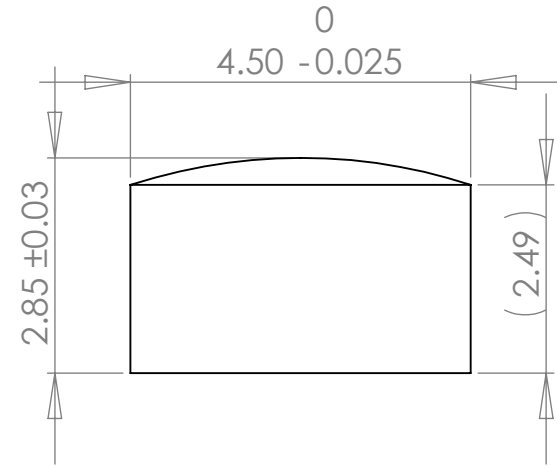


	Base Radius (mm)	CX	CC	Irregularity (fringes)	Clear Aperture (mm)	Surface Quality (typical)	Centration (arcmin)
R1	7.170	X		1.0	4.0	40/20	3
R2	Infinity			1.0	4.0	40/20	

REVISIONS				
ZONE	REV.	DESCRIPTION	DATE	APPROVED
	A	Initial release	6/29/2010	



Notes:

- 1) Material: S-BAL42M (nd=1.58046, Vd=58.98)
- 2) Edge Chamfer: 0.1-0.3mm
- 3) AR Coating: <0.25% Reflectivity from 1525-1570nm, per surface. Both surfaces coated
- 4) All dimensions in mm unless noted.

3402 Enterprise Dr.
Rowlett, TX 75088
Ph: (972) 463-8001
Web: www.archeroptx.com



PROPRIETARY AND CONFIDENTIAL
THE INFORMATION CONTAINED IN THIS DRAWING IS THE SOLE PROPERTY OF ARCHER OPTX, INC. ANY REPRODUCTION IN PART OR AS A WHOLE WITHOUT THE WRITTEN PERMISSION OF ARCHER OPTX, INC IS PROHIBITED.

UNLESS OTHERWISE SPECIFIED:		NAME	DATE	TITLE: P4512-1550
DIMENSIONS ARE IN MM TOLERANCES: FRACTIONAL ± ANGULAR: MACH ± BEND ± TWO PLACE DECIMAL ± THREE PLACE DECIMAL ±		DRAWN		
		CHECKED		
		ENG APPR.		
		MFG APPR.		
INTERPRET GEOMETRIC TOLERANCING PER:		Q.A.		SIZE DWG. NO. REV B 062910-1 A
MATERIAL		COMMENTS:		
NEXT ASSY	USED ON	FINISH		SCALE: 10:1 WEIGHT: SHEET 1 OF 1
APPLICATION		DO NOT SCALE DRAWING		