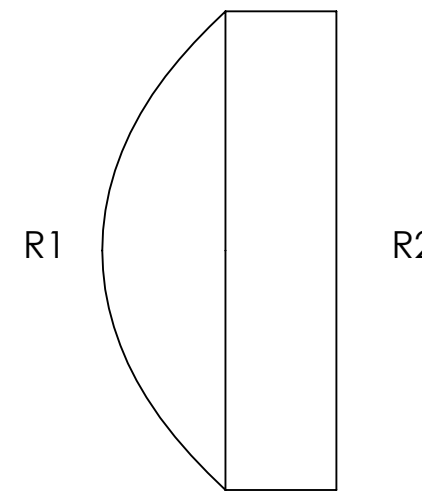
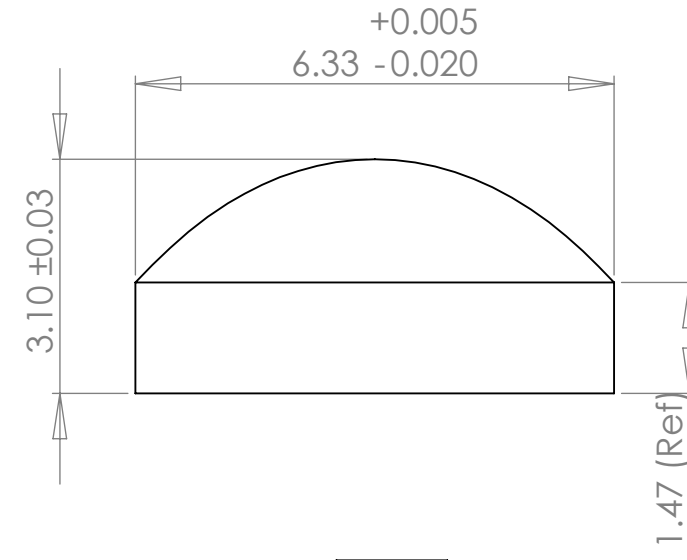
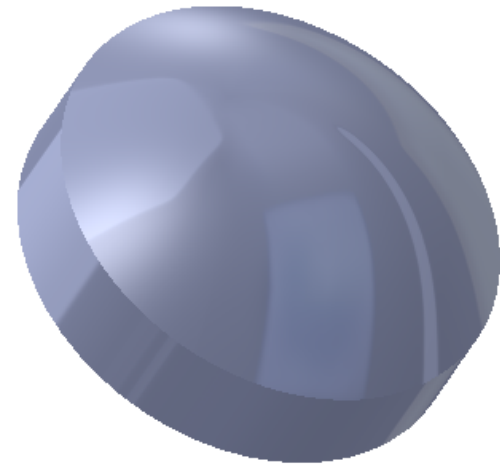


	8	7		6		5	
	Base Radius (mm)	CX	CC	Irregularity (fringes)	Clear Aperture (mm)	Surface Quality (typical)	Centration (arcmin)
R1	3.375	X		1.0	5.0	40/20	3
R2	228.2	X		1.0	4.5	40/20	

REVISIONS				
ZONE	REV.	DESCRIPTION	DATE	APPROVED



Notes:

- 1) Material: S-LAM60M (nd=1.73793, Vd=49.01).
- 2) Edge Chamfer: 0.1-0.3 mm.
- 3) Ar Coating: <0.5% reflectivity from 400-650nm ("A" coat) or 620-1080nm ("B" coat), per surface.
- 4) All dimensions in mm unless noted.

3402 Enterprise Dr.  
Rowlett, TX 75088  
Ph: (972) 463-8001  
Web: www.archeroptx.com

**Archer Optx**  
Optical Precision. Optimal Outcome.

**PROPRIETARY AND CONFIDENTIAL**  
THE INFORMATION CONTAINED IN THIS DRAWING IS THE SOLE PROPERTY OF ARCHER OPTX, INC. ANY REPRODUCTION IN PART OR AS A WHOLE WITHOUT THE WRITTEN PERMISSION OF ARCHER OPTX, INC IS PROHIBITED.

UNLESS OTHERWISE SPECIFIED:	NAME	DATE	TITLE: <b>L230</b>
DIMENSIONS ARE IN MM	DRAWN		
TOLERANCES:	CHECKED		
FRACTIONAL ±	ENG APPR.		
ANGULAR: MACH ± BEND ±	MFG APPR.		
TWO PLACE DECIMAL ±	Q.A.		SIZE DWG. NO. REV
THREE PLACE DECIMAL ±	COMMENTS:		<b>B</b> <b>C</b>
INTERPRET GEOMETRIC TOLERANCING PER:			SCALE: 10:1 WEIGHT: SHEET 1 OF 1
MATERIAL			
FINISH			
NEXT ASSY USED ON			
APPLICATION			
	DO NOT SCALE DRAWING		